

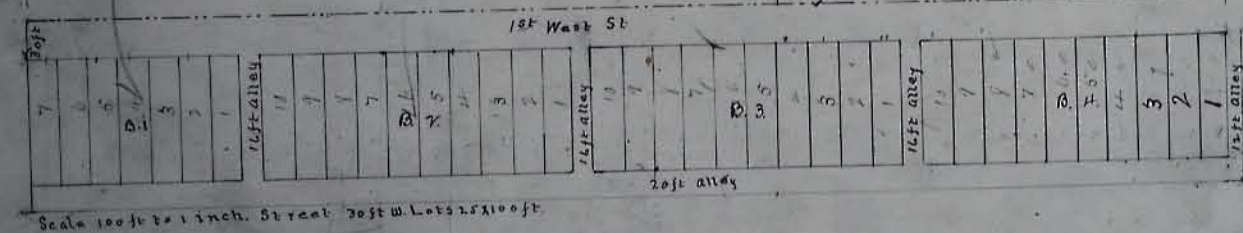
Meads Survey

Welby Townsite

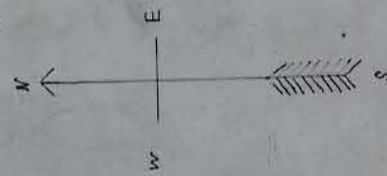
Pratts Survey

Welby Townsite

Meads Survey



Filed in the office of the County recorder of Emery County November 10th 1891 by A. F. and Lydia Mead approved November 7th 1891 by Probate Judge Jasper Robertson and recorded in said office November 10th 1891



Pratts Survey



Filed in the office of the County recorder of Emery County October 13th 1891 by Land Annie Pratt, approved by Probate Judge Jasper Robertson, and recorded in said office October 13th 1891.

Scale 100 feet to 1 inch
All lots except Block 1
Left side except Block 1
which is 200 ft.